

विरासत®

# NARTAKI















विगसत®



• 2005 •



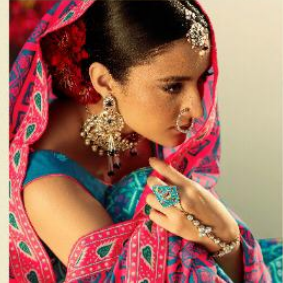


• 2001 •



*Dreams in fashion*

ENJOY THE POWER OF OUR LARIK & LACY LOOK.





D.NO	DESCRIPTION	BLOUSE FABRIC	LEHENGA FABRIC	DUPATTA FABRIC	SIZE
2001	A STUNNING LEHENGA WITH BEAUTIFUL PRINT & STONE WORK WITH DESIGNER LATKAN DESIGNED SPECIALLY FOR WEDDING AND EVENT SEASON	HEAVY KILLER SILK WITH FUSING	HEAVY SILK WITH CREPE SILK INNER & HEAVY CANCAN	HEAVY SOFT MASLIN PRINT WITH BORDER LESS (2.50 mtr)	L,XL,XXL AND SEMI SEMI-STICHED
2002	A STUNNING LEHENGA WITH BEAUTIFUL PRINT & STONE WORK WITH DESIGNER LATKAN DESIGNED SPECIALLY FOR WEDDING AND EVENT SEASON	HEAVY KILLER SILK WITH FUSING	HEAVY SILK WITH CREAP SILK INNER & HEAVY CANCAN	HEAVY SOFT MASLIN PRINT WITH BORDER LESS (2.50 mtr)	L,XL,XXL AND SEMI SEMI-STICHED
2003	A STUNNING LEHENGA WITH BEAUTIFUL PRINT & STONE WORK WITH DESIGNER LATKAN DESIGNED SPECIALLY FOR WEDDING AND EVENT SEASON	HEAVY KILLER SILK WITH FUSING	HEAVY SILK WITH CREAP SILK INNER & HEAVY CANCAN	HEAVY SOFT MASLIN PRINT WITH BORDER LESS (2.50 mtr)	L,XL,XXL AND SEMI SEMI-STICHED
2004	A STUNNING LEHENGA WITH BEAUTIFUL PRINT & STONE WORK WITH DESIGNER LATKAN DESIGNED SPECIALLY FOR WEDDING AND EVENT SEASON	HEAVY KILLER SILK WITH FUSING	HEAVY SILK WITH CREAP SILK INNER & HEAVY CANCAN	HEAVY SOFT MASLIN PRINT WITH BORDER LESS (2.50 mtr)	L,XL,XXL AND SEMI SEMI-STICHED
2005	A STUNNING LEHENGA WITH BEAUTIFUL PRINT & STONE WORK WITH DESIGNER LATKAN DESIGNED SPECIALLY FOR WEDDING AND EVENT SEASON	HEAVY KILLER SILK WITH FUSING	HEAVY SILK WITH CREAP SILK INNER & HEAVY CANCAN	HEAVY SOFT MASLIN PRINT WITH BORDER LESS (2.50 mtr)	L,XL,XXL AND SEMI SEMI-STICHED
2006	A STUNNING LEHENGA WITH BEAUTIFUL PRINT & STONE WORK WITH DESIGNER LATKAN DESIGNED SPECIALLY FOR WEDDING AND EVENT SEASON	HEAVY KILLER SILK WITH FUSING	HEAVY SILK WITH CREAP SILK INNER & HEAVY CANCAN	HEAVY SOFT MASLIN PRINT WITH BORDER LESS (2.50 mtr)	L,XL,XXL AND SEMI SEMI-STICHED



# NARTAKI

art and form traditional dances

विगम



2001



2002



2003



2004



2005



2006